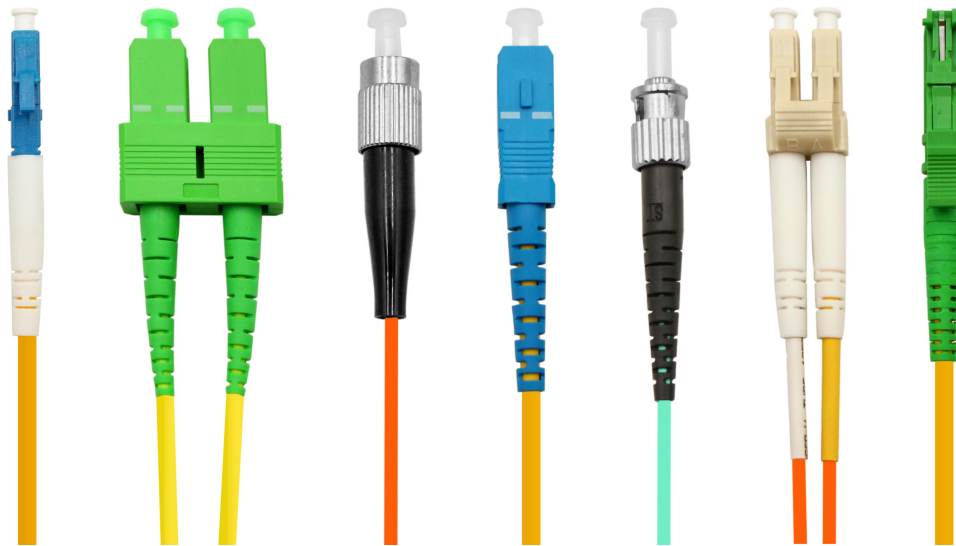


Fiber Patch Cables

Fiber Optic Patch Cord



Product Features

- ❖ Low insertion loss and high return loss
- ❖ Serialized & Individual Test Records
- ❖ Guaranteed Zero Defects
- ❖ Meets RoHS and Bell core GR 326-core standards
- ❖ Custom Configurations Available at No Extra Charge
- ❖ 3D fiber interferometer is available
- ❖ FC, LC, SC, ST, MU optional

Applications

- ❖ Telecommunication networks
- ❖ Fiber optic communication networks
- ❖ CATV, LAN, WAN, Test & Measurement
- ❖ Optical access network
- ❖ Data processing networks

Optic Fiber Connectors Guidance

A patch cord is a fiber optic cable used to attach one device to another for signal routing.



LC Connectors

LC stands for Lucent Connector. It is a small form-factor fiber optic connector, half the size of the SC connector.



SC Connectors

SC stands for Subscriber Connector- a general purpose push/pull style connector. It is a square, snap-in connector latches with a simple push-pull motion and is keyed.



FC Connectors

FC stands for Fixed Connection. It is fixed by way of threaded barrel housing. FC connectors are generally constructed with a metal housing and are nickel-plated.



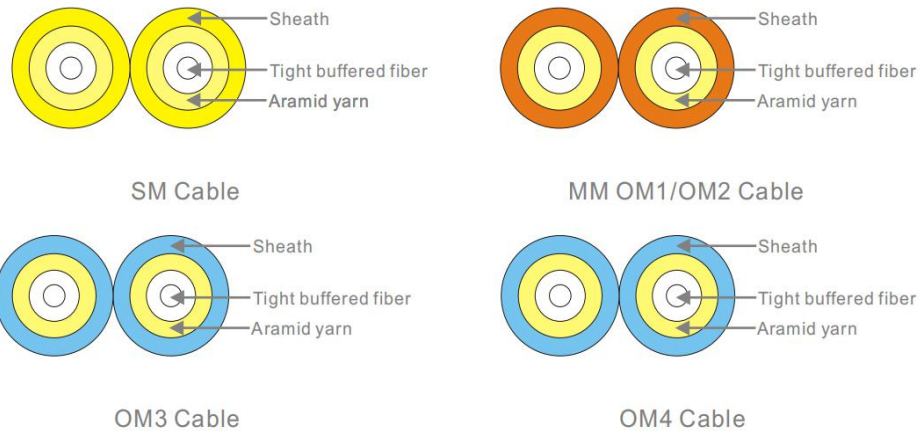
ST Connectors

ST stands for Straight Tip- a quick release bayonet style connector. ST connectors are cylindrical with twist lock coupling. They are push-in and twist types

Specification

Parameter		Single Mode			Multi Mode
Basic	Fiber connector	FC, SC, LC, ST, MU, E2000			
	Ferrule End-face	PC	UPC	APC	UPC
	Insertion Loss	≤0.3dB	≤0.3dB	≤0.3dB	≤0.3dB
	Return Loss	≥45dB	≥50dB	≥60dB	≥25dB
	Ceramic Ferrule Specification	125.5um concentricity deviations:≤1um			127um concentricity deviations:≤3um
	Suitable Fiber	9/125um			50/125um,62.5/125um
End-face Geometry	Radius of Curvature	7~25mm	5~12mm	N/A	
	Fiber Protrusion	≤50nm	≤100nm	N/A	
	Fiber Under Cut	≤100nm	≤100nm	N/A	
	Apex offset	≤50um			
Mechanical	Exchangeability	≤0.2dB			
	Salt Spray	≤0.1dB			
	Drop	≤0.2dB(1.5M, 5 drops)			
	Vibration	IL ≤0.2dB(550Hz, 1.5mm)			
	Repeatability	≤ 0.1dB(1000 times)			
	Durability	> 1000 times			
	Operating Temperature	-20°C ~ +70°C			

Cable Structure



Ordering Information

Follow the steps below to order related products:

Step 1: Connector Type: FC, SC, LC, ST, MU, E2000

Step 2: Ferrule End-face: PC, UPC or APC

Step 3: Fiber Type: Single Mode(SM) or Multimode

Step 4: Cable Core: Simplex or Duplex

Step 5: Cable Diameter: 0.9mm, 2.0mm or 3.0mm

Step 6: Cable Length: 1, 2, 3 meter or customized

Step 7: Cable Type: PVC, LSZH, OFNR, OFNP...

Step 8: Cable color: Yellow, Orange, White, Blue, Green, Red,